



**RIOScan**

Digital Imaging Plate System

# Advances at a Glance

## Fast and intuitive workflow

RIOScan offers various functions to minimize work time.

- 5 second scan time (HS Mode)
- **Automatic plate detection :**  
Plate insertion and correct plate side is detected for image reading.
- **Auto erasing**
- **Preview function :**  
Users can check the images through the touch screen whether they are properly attained.
- **QuickScan mode :**  
Images can be scanned and stored in the internal memory while network connection has dropped.

## Multiple access and sharing in your clinic

Users can place RIOScan at any small space in their clinics, such as chair side, worktable or x-ray room, for convenient scanning. Ethernet connection enables users to view the images in every PC in the clinic.

## Convenient image management

RIOView software provides convenient features such as image management, image measurement, multi-view and FMX (Full Mouth X-ray) mode.

Users can also adjust image filters upon their preferences including sharpness, brightness and contrast.

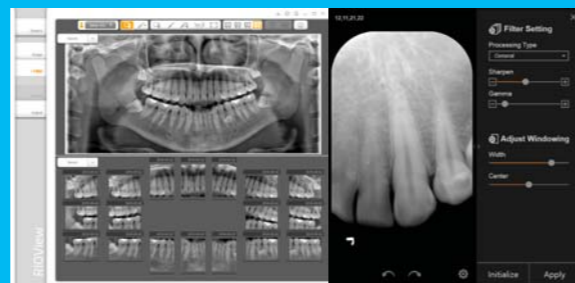
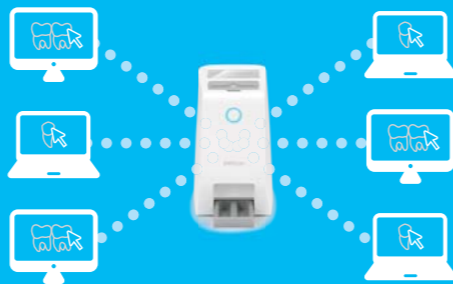


Image preview

Automatic plate detection

Gravity scan

Auto erasing

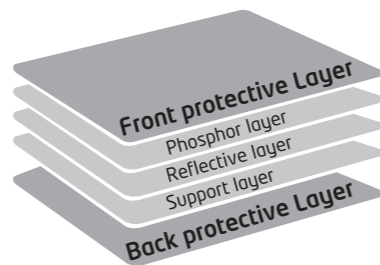




### Patient comfort & Easy examination

- Flexible and soft image plates make x-ray examination painless for patients.
- Since plates are placed closer to gingiva area than intraoral sensors, image quality gets enhanced.
- Cable-free plates reduce users' difficulties.
- Users are free from positioning limits.

## Advantages of Image Plate



### Double protection of image plate

- Front and back protection layers reduce the risk of physical impact.
- There are no wire abrasions or connection errors that occur frequently on intraoral sensors.

High quality images for accurate diagnosis  
5 different image plate sizes for all intraoral examinations



Obtained from local clinics and hospital

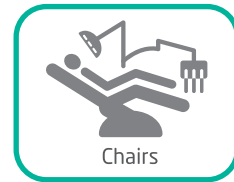
Enhanced Image Quality

# For Chairside & Multi-share

## 2 Multi-access with Existing Ray Viewer SMARTDent<sup>1)</sup>



Doctor Consultation



Chairs



## 1 Standalone RIOView



## 3 Integration with Existing 3rd Party Viewer

TWAIN / RAY SDK  
Bridge(PMS)  
Gateway(PACS)



PACS Viewer



Workstation Viewer



Practice Management Software

### Network environment

- Support standalone and multiple network access
- Support 3<sup>rd</sup> party integration with TWAIN, RAY SDK, bridge and gateway. (contact local representative)
- DICOM 3.0 compatible

### Operating environment

<b>Operating system</b>	Microsoft Windows 7(32bit / 64bit) Microsoft Windows 8(32bit / 64bit) Microsoft Windows 10(32bit / 64bit)
<b>Processor</b>	Intel i5 or higher
<b>Screen resolution</b>	1280 x 800 or higher
<b>Ethernet</b>	100Mbps fast ethernet

<sup>1)</sup> SMARTDent server(RayServer) only operates under Windows 7 Professional.

# Technical Data

## Components



- 1 Touch screen
- 2 Image plate guide \*
- 3 Power button
- 4 Image plate tray \*
- 5 Image plate
- 6 Image plate storage box
- 7 Image plate storage box pad

\* Removable and washable for hygienic purpose

## Specifications

RIOScan(Model: RPS500)

Item	Standard package	Occlusal kit
Image plate size	Size 0~Size 3	Size 4
Resolution (Theoretical)	SHR 21 lp/mm HR 16 lp/mm HS 9 lp/mm	
Gray scale	14 bit	
Display	4.3" Touch screen	
Connection	Ethernet	
Dimension	170(W) x 260(H) x 278(D) mm	
Weight	Approx. 3.5 kg	
Power supply	100-240 V~, 1.5 A, 50-60 Hz, (24 VDC Adapter, 2.5 A)	

### Operation Conditions

- Temperature : 10~35 °C
- Humidity : 20~80 % RH
- Atmospheric pressure : 800 hPa~1060 hPa

## Image Plate Sizes



22x35 mm  
0.87x1.38"

24x40 mm  
0.94x1.57"

31x41 mm  
1.22x1.61"

27x54 mm  
1.06x2.13"

57x76 mm  
2.24x2.99"



## Ray Europe GmbH

Otto-Volger-Straße 9b, 65843 Sulzbach am Taunus

**Tel.** +49 (0)6196 7656 102

**Email** [info@rayeurope.com](mailto:info@rayeurope.com)

**Web** [www.rayeurope.com](http://www.rayeurope.com)

## Ray Co., Ltd.

332-7, Samsung1-ro, Hwaseong-si, Gyeonggi-do, 18380, Korea

**Tel.** +82 31 605 1000 **Web** [www.raymedical.com](http://www.raymedical.com)

## **Emergo Europe**

Prinsessegracht 20, 2514 AP The Hague, The Netherlands

Design and specifications are subject to change without notice.

RBS-PS01 (rev.1)